

NATIVE CROP TOOLKIT

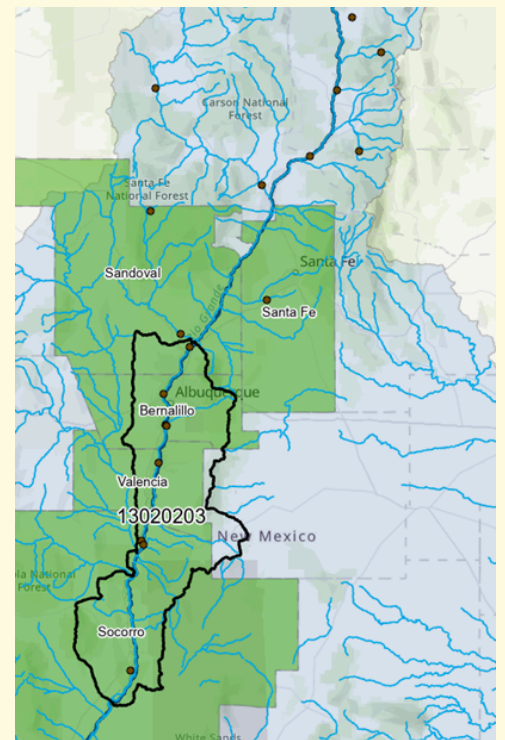


SEEKING CENTRAL NEW MEXICO FARMERS TO JOIN FARMER-TO-FARMER HUB & INSTALL NATIVE CROP TOOLKIT

The Institute for Applied Ecology's Southwest Seed Partnership is launching a collaborative Native Crop Toolkit in 2026 at 16 small farms along the Rio Grande River. **The Native Crop Toolkit** aims to increase dryland farming resiliency by utilizing on-farm conservation practices in the Rio Grande River Watershed in central New Mexico.

The Toolkit incorporates conservation strategies (habitat restoration, native seeds, pollinator resources) into traditional agricultural practices (production fields, cover crops, hedgerows), resulting in **four Native Crop Tools: native seed production fields, native cover crops, pollinator hedgerows, and habitat restoration on fallow fields**. Farmers can customize Tools and species that best suit their land, needs, capacity, and expertise, while benefitting from fewer resource inputs and a farmer-to-farmer (F2F) hub.

The **F2F Hub** is a venue to connect farmers with the Toolkit and each other, training and contract production opportunities, equipment sharing, technical guides for implementing the Native Crop Toolkit and species cultivation practices.

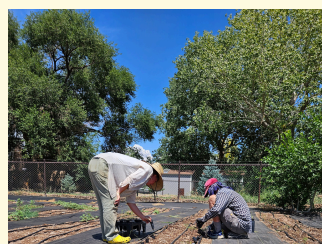


The New Mexico Rio Grande Watershed; counties in green and the project area outlined in black.

STABILIZE SOILS; SUPPORT BENEFICIAL INSECTS, POLLINATORS, WILDLIFE, AND A ROBUST MICROBIAL COMMUNITY; AND IMPROVE WATER QUALITY BY REDUCING POLLUTANT AND SEDIMENT RUN-OFF.



The mission of IAE is to conserve native species and habitats through restoration, research and education. The Southwest Branch has been coordinating the Southwest Seed Partnership since 2015.

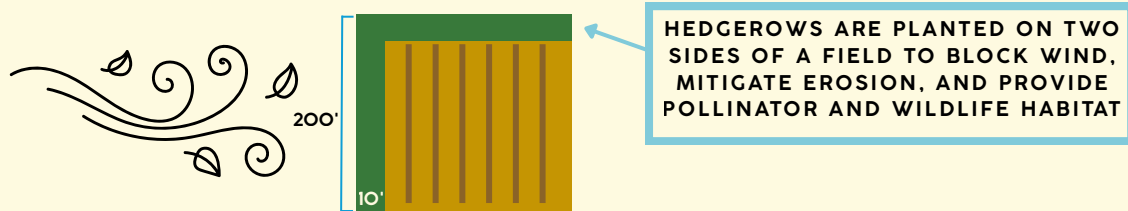


The mission of the SWSP is to develop native plant materials to support habitat restoration and conservation in the Southwest. The SWSP supports and connects farmers interested in producing native seed crops.

WHICH NATIVE CROP TOOL IS RIGHT FOR YOUR FARM?

FARMERS MAY CHOOSE ONE OR MULTIPLE TOOLS

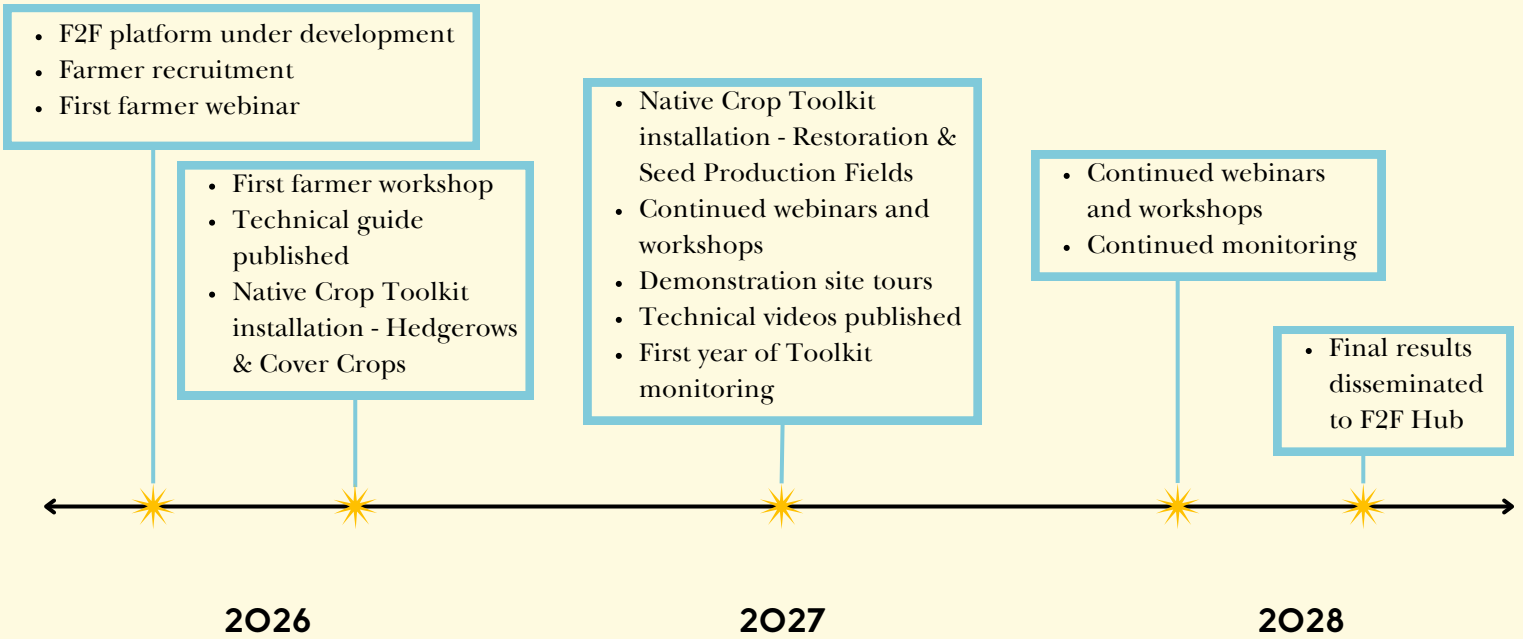
TOOL	DESCRIPTION	CONSERVATION BENEFITS	FARMER BENEFITS
Production field	Farmers are provided with starting seeds to grow a native seed field.	<ul style="list-style-type: none"> Reduces water and fertilizer use Supports native wildlife, pollinators, and microbial communities Increases availability of native seed for local restoration 	<ul style="list-style-type: none"> Low risk 2-year contract that can supplement income Technical/labor support Connections with other farmers growing native seed through the Hub
Hedgerow	Linear row of short to medium-sized flowering shrubs (and forbs) planted adjacent to crop.	<ul style="list-style-type: none"> Provides habitat & food sources for pollinators and wildlife Increases yields via increased pollination Reduces field soil loss Reduces need for pesticides via increasing beneficial insects Reduces weeds in acequia irrigated fields via water filtering 	<ul style="list-style-type: none"> Financial support for site preparation and maintenance Plant material provided Technical/labor support Long-term maintenance and care resources



Cover crop	Native species planted to cover soil. Species often have soil-enriching attributes and are easy to manage.	<ul style="list-style-type: none"> Reduces top-soil loss, erosion & soil drying Improves fertility and provides food for soil microorganisms Controls pests by encouraging beneficial insects & excluding weeds Increases habitat for wildlife and pollinators 	<ul style="list-style-type: none"> Financial support for site preparation and maintenance Fields direct sown with provided seed Technical/labor support
Habitat restoration	Rehabilitation of damaged or degraded lands to restore ecological functions using native plant materials.	<ul style="list-style-type: none"> Promotes and conserves biodiversity Increases habitat and connectivity for wildlife Filters water, stabilizes soil, and sequesters carbon Improves resilience to environmental stress 	<ul style="list-style-type: none"> Fallow or degraded areas are enhanced Restoration/assessment plans provided Site preparation and planting completed by IAE

Farmer-to-Famer Hub	Central location for Toolkit training opportunities and communication between farmers.	<ul style="list-style-type: none"> English and Spanish print and online resources Video chapters providing technical guidance On-farm workshops on installation and monitoring of Toolkit Webinars and farm tours Equipment share (ATV, seed drill, broadcast seeder, monitoring supplies) 	<ul style="list-style-type: none"> Financial support available for Spanish translation, hosting workshops/tours, and travel One paid registration to attend the 2027 National Native Seed Conference
---------------------	----------------------------------------------------------------------------------------	-----------------------------------------------------------------------------------------------------------------------------------------------------------------------------------------------------------------------------------------------------------------------------------------------------------------------------------------------	------------------------------------------------------------------------------------------------------------------------------------------------------------------------------------------------------------------------------

PROJECT TIMELINE



**INTERESTED IN JOINING THE FARMER-TO-FARMER HUB AND
INSTALLING A NATIVE CROP TOOL AT YOUR PROPERTY?**

GET IN TOUCH WITH US:
MIABRANN@APPLIEDECO.ORG
(505)490-4910 EXT. 714



FIND OUT MORE AT
SOUTHWESTSEEDPARTNERSHIP.ORG