



BE BOLD. Shape the Future.
**College of Agricultural, Consumer
and Environmental Sciences**
Cooperative Extension Service
Sandoval County Extension Office

CLOVERLEAF

Sandoval County Cooperative Extension

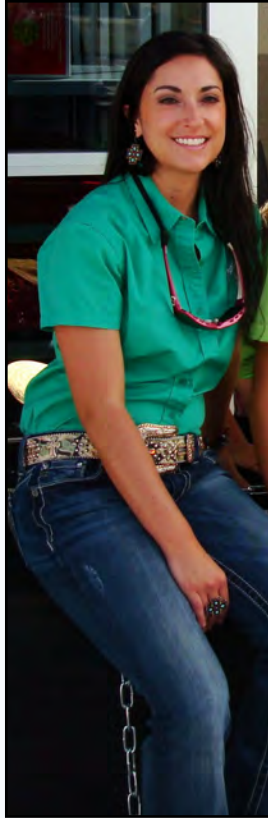
Mailing: P. O. Box 400 • Bernalillo, New Mexico 87004
Physical: 711 S Camino del Pueblo, Bernalillo, NM 87004
(505) 867-2582

November 2022



Goodbye Nicole, We'll Miss You! Details Inside . . .

New Mexico State University is an equal opportunity/affirmative action employer and educator.
NMSU and the US Department of Agriculture cooperating.



Good-Bye Nicole . . .

As most of you know, our Nicole has left Sandoval County Extension.

We were not surprised when we heard she was "hired on the spot" to serve the Albuquerque Public Schools as the Family and Consumer Sciences educator. She will now have more well deserved time with her growing family and friends, with weekends, holidays and summers off!

We of course are emotional over her departure and "Thank You" are only two little words, but they convey a multitude of gratitude for the many positive assets that Nicole brought to Sandoval County and our 4-H Families. Her enthusiasm continually shined and she became the greatest team member. Nicole brought nothing but progressive results, day after day, year after year to our county office, and to our residents, 4-H Leaders and Youth.

Nicole personified what it took to be a true County Extension Agent, going above and beyond the call of duty in her position to enhance what our programs offer. She is a prime example of making the 'Best Better', and Nicole excelled in all aspects. It's been a sincere pleasure working with Nicole!

More than "an employee" we wish Nicole the greatest accomplishments to her new position—taking all of her time, talents and treasure with her. We bet that soon we'll hear that she has been chosen "Teacher of the Year."

We feel that Nicole leaving is a great loss to the NMSU system, but we also know she will shine as the brightest light in her new position. All of the hours, nights, weekends that Nicole spent building this Extension went far beyond what was called for and if there was an Award for 'The Best of the Best' — Nicole would receive it. She had received "Outstanding 4-H Agent" of the year.

So, Nicole, "Thank You" for the time spent helping to build the Sandoval County Extension to what it is today. We Miss You!

Best Wishes Nicole! ~Steve ~Elizabeth

Have you Enrolled for 2023?



Easy To Enroll: If you enrolled for 2022, all profiles are in the Zsuite system, and marked as "Inactive" on roll over for the 2023 4-H year.

Families need to go in to your Household Account and start up a new enrollment by clicking the More Actions Tab, then Create Enrollment.

You can view your previous enrollments by changing the 4-H dropdown option on "Enrollments" from 2022-2023 to 2021-2022 .

If you are new to 4-H, create a new Household Account. If you enrolled for 2023 before October 1, 2022 you need to go into the 2021-2022 year in your Household Account and follow steps above for 2023.

Don't forget to choose your projects and Don't forget to upload your Medical Release!!! You won't be approved until you do! —Steve

4h.ZSuite.org

YOUTH/LEADERS!

You will not be approved for Enrollment until you have scanned and uploaded your Medical Release into the Zsuite system.

LEADERS, each year, you must also have completed the mandatory 'Working with Minors' (WWM) for enrollment.

The link to Working with Minors is here:

<https://aces.nmsu.edu/county/bernalillo/4hyouth/documents/zsuite-instructions-for-4-h-volunteers.pdf>

Email copy of your WWM completed certificate to sandoval@nmsu.edu

Any questions, contact us!



LEADERS & VOLUNTEERS!

**ALL CLUB LEADERS & VOLUNTEERS MUST COMPLETE MANDATORY
'WORKING WITH MINORS' MODULE ON **ZSUITES** (Each Year)**

The State 4-H has been working with **ZSuites** on resetting issues with the Working with Minor module. It seems that some are able to complete the module without issue while some are not

The reset button that was added last year should be active and allow the individual in **ZSuites** to take the module again. If, however, you run into issues, please let Steve and Elizabeth know. sandoval@nmsu.edu

Volunteers—Here are the steps to take:

Once the volunteer is in his/her/family ZSuite account and has selected his/her profile follow the steps below:

1. Click on Clover Academy on the left menu bar
2. Launch Clover Academy
3. Open NM Working with Minors (even though it says completed)
4. Under 'You have earned a certificate' is a button that says [Reset All Course Progress for New Year (Cannot be undone.)]
5. Click on the blue 'Reset All Course Progress for the New Year (Cannot be undone)
6. Start Course

Complete the course and a certificate will be available with the completion date. Sandoval County 4-H ZSuite administrators (Steve, Elizabeth) should be able to see the volunteer completion on our county page.

Just a reminder, as stated above, all of us that work directly with youth (agents, staff, program assistants, etc) need to take the working with minors training annually.

**SENIOR LEADERSHIP RETREAT
2023**



**Friday, Jan 20-
Sunday Jan. 22
Albuquerque, NM**

**EVENT
INCLUDES**

lodging, t-shirt,
meals, keynote
speaker, career
workshops, tours
and more!



**Cost is \$200
SANDOVAL COUNTY REGISTRATION
DUE BY DECEMBER 9, 2022
Email sandoval@nmsu.edu**

SLR

SLR 2023

**What's happening
at SLR**

2023



DANCES!

COMMUNITY SERVICE!

**Taking donations for animal shelters
and making dog toys**

Community Service Donations:

Dog/Cat Food (unopened)
Toys

Chewy Gift Cards
Towels (gently used or new)

Community Service Activity

(please bring the following to make dog toys):

Towels (gently used or new)

T-shirts (gently used or new)



4-H Member Ages For 2022-2023 4-H Year

CLOVERBUD: 5 to 8, years old AND in Kindergarten, 1st or 2nd grade

NOVICE: 9 to 11 years old or 8 years old AND in the 3rd grade.

JUNIOR: 12 and 13 years old or 11 years old AND in 6th grade.

SENIOR: 14 to 18 years old or 13 years old AND in 8th grade

Youth who are 19 on or by December 31 of the current 4-H year (2022) are NOT eligible to enroll as a 4-H member.

**NEW TO
4-H?**



Enroll your youth in 4-H today & watch them grow into leaders for tomorrow!

Sandoval County 4-H Clubs

CLUB	Club Meeting Date	Meeting Time	Meeting Location	Contact Leader	Contact
Corralitos	1st Monday Each Month	6:00pm	Corrales Community Building/Next to Fire Station	Desiree McSween	desimcswn@yahoo.com
Cotton City Cottontails	2nd Monday Each Month	6:00pm	El Zocalo Bernalillo		
Cuba Coyotes	2nd Monday each Month	6:00pm	Sandoval County Fairgrounds	Olivia Casaus	(575) 639-1475
Jemez Mountain Stallions	2nd Thursday Each month	5:30pm	San Ysidro Village Offices	Rosanna Garcia	(505) 379-7532
Jemez Red Rockers	3rd Friday each Month	4:30pm	San Ysidro Village Offices	Aimee Tang	tmtang@yahoo.com
Rio Grande Rebels	2nd Monday Each Month	6:00pm	El Zocalo Bernalillo		
Torreon Wolfpack	TBD	TBD	Torreon Chapter	Lee Johnson	(505) 330-5881

4-H Scholarship Information



SANDOVAL COUNTY 4-H SCHOLARSHIP

Sponsored by Sandoval County 4-H Council



Scholarship Information

A Scholarship fund has been established by the 4-H County Council to provide financial assistance to 4-H members that wish to attend State, District, or County 4-H events. Scholarship will cover 50% of the registration expenses for Senior Leadership Retreat, Youth-Get-Away, Livestock School, Horse School, Home Ec School, 4-H Dog School, or \$250 of the team fees for serving as a State 4-H Officer, Ambassador, or a Diplomat. The scholarship will cover 100% of the registration expenses for 4-H County Camp. The funding may not be used to attend State 4-H Conference, State 4-H Shooting Sports Contest, nor District Contest.

Scholarship Criteria—Available to any Novice, Junior or Senior 4-H Member.

For Application, Link to: <http://sandovalextension.nmsu.edu/county-council.html>

- ▶ 4-H member must submit a Sandoval County 4-H Scholarship application Form.
- ▶ Scholarship Applications for the events are due 1 1/2 months before the event registration deadline. Here Are the Application Deadlines Coming up:

4-H EVENT	DEADLINE FOR APPLICATION
Senior Leadership Retreat	November 1, 2022
Home Ec School	February 1, 2023
Youth-Get-Away	February 15, 2023
Horse School	April 1, 2023
4-H Dog School	May 1, 2023
Livestock School	May 1, 2023
Ambassador/Diplomat and Officer Position	May 15, 2023

THE STATE 4-H COMMUNITY SERVICE SCHOLARSHIP CRITERIA



- ▶ Available to any Novice, Junior or Senior 4-H Member, serving as a State 4-H Officer, Ambassador, Diplomat or participant in a 4-H activity.
- ▶ Must submit a New Mexico 4-H Community Service Scholarship application form which is available on the State 4-H website.

EVENT (Community Service Scholarship Application)	DEADLINE FOR APPLICATION (2 MONTHS BEFORE EVENT)
Senior Leadership Retreat	October 17, 2022
Home Ec School	January 14, 2023
Youth-Get-Away	February 1, 2023
Horse School	March 16, 2023
4-H Dog School	April 17, 2023
Livestock School	April 17, 2023
State 4-H Conference	April 17, 2023
Officers and Ambassadors Positions	May 1, 2023



4-H Dates & Deadlines

EVENT	DATE
Veteran's Day—Sandoval County Official Holiday	November 11
Thanksgiving Holiday—Extension Office Closed	November 24, 25
SLR Registration Deadline for Sandoval County	December 9
NMSU Christmas Holidays—Extension Office Closed	December 23, 26
NMSU Winter Break	December 23—January 3, 2023
New Years Day 2023	January 1
State Community Service Scholarship for Home Ec School Deadline	January 14
Martin Luther King, Jr. Holiday—Extension Office Closed	January 16
Senior Leadership Retreat (Albuquerque)	January 20-22
County Community Service Scholarship for Home Ec School Deadline	February 15
State Community Service Scholarship for Youth Get Away	February 1
County Community Service Scholarship for Youth Get Away	February 15
Family & Consumer Sciences (FCS) School—Bernalillo County Extension (4-H Center)	March 10-12
Youth Get-Away—Glorieta Camp	April 21-23

**For Questions on 4-H or Enrolling:
email sandoval@nmsu.edu
 or call (505) 867-2582**

*Thank You for your AWESOME 14 years with
 Sandoval County, Nicole!*

Happy Thanksgiving



ENROLL IN SANDOVAL COUNTY 4-H!

All Newsletters and Calendar Updates
<https://sandovalextension.nmsu.edu/4h/newsletters.html>



**New Mexico State University is an equal opportunity/affirmative action employer and educator.
 NMSU and the US Department of Agriculture cooperating.**